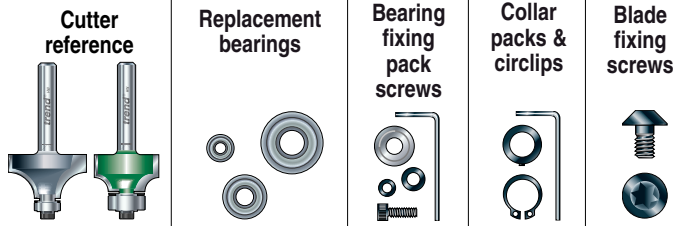


SPARE PARTS FOR ROUTER CUTTERS



Cutter reference	Replacement bearings	Bearing fixing pack screws	Collar packs & circlips	Blade fixing screws
7/90 & 7/91	B16	-	-	-
7/96 - 7/99	BNT/2	SP-E	-	-
8/20 & 8/21	B127A	SP-C	-	-
8/30 & 9/70	B16F	SP-D	-	-
8/40 - 44	B127A	SP-C	-	-
8/51 & 8/53	B127A	SP-C	COLL/14	-
9/41 & 9/42	B95A	SP-J	-	-
9/55 - 9/57	B127A	SP-C	-	-
9/70	B16F	SP-D	-	-
9/71	B127A	SP-C	-	-
9/72-9/76	B16F	SP-D	-	-
9/77	B19	SP-A	-	-
9/78	B17	SP-A	-	-
9/80	B16	SP-A	-	-
9/85	B16F	SP-A	-	-
9/87 & 9/88	B16F	SP-D	-	-
9/95 - 9/98	B16 & B16	SP-E	-	-
11/20	B127	-	COLL/14	-
11/41	B19C	-	COLL/12	-
11/60	BNT/2	SP-E	-	-
11/40 & 13/40	B127	-	COLL/14	-
13/41	B16	-	COLL/14	-
13/42	B19	-	COLL/14	-
13/50	B19C	-	COLL/12	-
17/01	B127	-	COLL/14	-
17/1	B19	-	COLL/14	-
17/2	BB22	-	COLL/14	-
17/4	B29C	-	COLL/14	-
18/53 & 18/55	BB22	-	CIRC/1	-
18/54 & 18/56	B35G	-	CIRC/2	-
18/80 - 18/84	B127A	SP-C	-	-
21/1 (1/4)	B19	-	COLL/14	-
21/1 (1/2)	B19C	-	COLL/12	-
21/2	B254G	-	COLL/12	-
21/3	B38G	-	COLL/12A	-
22/4	B127A	SP-C	-	-
23/09 & 23/12	B127	-	COLL/14	-
23/10 (1/4)	B19	-	COLL/14	-
23/10 (1/2)	B19C	-	COLL/12	-
23/11	B29C	-	COLL/12	-
25/3 & 25/5	B95A, B127A, B16A, B16D	SP-C	CIRC/3	-
25/7	B127A, B16A, B19A, B19C	SP-C	CIRC/2	-
26/2	B127	-	COLL/14	-
26/3	B19	-	COLL/14	-
26/4	B16	-	COLL/14	-
27/35 & 27/59	BB28	-	-	-
30/2 - 30/6	B127	-	COLL/14	-
33/55 - 33/56	BB16	-	COLL/8	-
34/60 & 34/61	B19C	-	COLL/12	-
34/90 - 34/92	B127, B16, B19	SP-E	-	-
40/13 - 40/16	B95A, B127A, B16A	SP-J	-	-
40/32	B127A	SP-J	-	-
41/5	B127A	SP-C	-	-
45/1 - 45/3	B63B	SP-G	-	-

REPLACEMENT BEARINGS

To order the correct replacement bearing, please use the chart above.

Care and maintenance
Check bearings regularly for free running and replace if faulty.

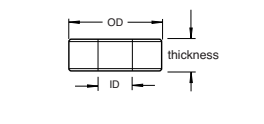
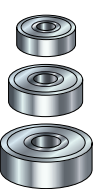
Bearings are shielded to prevent penetration of dust and grease packed for life. They should not be cleaned with solvent or lubricated as this will dissolve the grease and cause premature bearing failure. Scrape off any resin build-up.

Ref. B182 is sleeved and can be re-ground.

Always check the tightness of the fixing screw before using cutter.

Bearing size conversion

inch	mm
1/8	= 3.2
3/16	= 4.76
1/4	= 6.35
3/8	= 9.55
1/2	= 12.7
1	= 25.4
1-1/8	= 28.6
1-3/8	= 34.9



OD	ID	Thickness	Ref.	Price
3/16"	3/32"	3/32"	B48J	£8.22
1/4"	1/8"	7/64"	B63B	£8.22
3/8"	1/8"	5/32"	B95B	£8.40
3/8"	3/16"	1/8"	B95A	£8.22
1/2"	1/8"	11/64"	B127B	£10.59
1/2"	3/16"	3/16"	B127A	£6.56
1/2"	1/4"	3/16	B127	£9.89
14.0mm	3/16"	5.0mm	B14A	£15.11
14.0mm	5.0mm	5.0mm	B14F	£14.60
5/8"	1/8"	3/16"	B16B	£12.43
5/8"	3/16"	3/16"	B16A	£8.40
5/8"	1/4"	3/16"	B16	£5.88
5/8"	3/8"	5/32"	B16D	£15.11
16.0mm	5.0mm	4.9mm	B16F	£15.11
16.0mm	8.0mm	5.0mm	BB16	£14.03
17.0mm	1/4"	7/32"	B17	£15.11
18.0mm	1/4"	3/16"	B18	£15.43
18.2mm	1/4"	3/16"	B182	£12.43
19.0mm	6.0mm	6.0mm	B19H	£11.59
3/4"	1/8"	3/16"	B19B	£13.29
3/4"	3/16"	3/16"	B19A	£10.59
3/4"	1/4"	9/32"	B19	£6.56
3/4"	1/2"	5/32"	B19C	£9.92
20.0mm	1/4"	5.9mm	B20	£14.03
22.0mm	1/4"	6.0mm	B22	£14.03
28.0mm	12.0mm	8.0mm	B28	£15.11
30.0mm	3/16"	5.0mm	B300A	£15.11
30.0mm	1/4"	9/32"	B300	£14.03
22.0mm	8.0mm	7.0mm	BB22	£14.09
22.0mm	1/2"	6.0mm	B22C	£20.33
7/8"	3/8"	9/32"	B78D	£13.29
23.0mm	1/2"	5.0mm	B23C	£13.29
24.0mm	1/2"	5.0mm	B24C	£13.29
25.0mm	15.0mm	6.0mm	B25G	£18.98
25.40mm	9.1mm	6.35mm	B254	£14.03
25.4mm	15.0mm	5.5mm	B254G	£18.98
1"	1/2"	4.0mm	B254C	£18.98
28.0mm	8.0mm	8.9mm	BB28	£18.98
28.0mm	1/2"	5.0mm	B28C	£20.33
1-1/8"	1/2"	5/16"	B29C	£14.03
32.0mm	12.0mm	10.0mm	B32	£14.03
1-3/8"	1/2"	7/16"	B35C	£18.98
41.0mm	8.0mm	10.6mm	BB41	£18.98

Cutter reference	Replacement bearing	Bearing fixing packs	Collar packs & circlips	Blade fixing screw
46/01	B127A	SP-J	-	SP-46/01D
46/010	B127A	SP-W	-	R7/M3.0
46/02 & 46/03	B19H	SP-Y	-	SP-46/02D
46/05 & 46/07	B63B	SP-G	-	-
46/06	B18	SP-A	-	-
46/09 & 46/090	B19C	-	COLL/12	-
46/2	B19	SP-E	-	-
46/23	B127A	SP-C	-	-
46/3 - 46/6C	B16	SP-A	-	-
46/6D - 46/6F	B127A	SP-C	-	-
46/7	B18	-	-	-
46/7/50	B127A	SP-A	-	-
46/7/60	B16F	SP-D	-	-
46/8/50	B95A	SP-C	-	-
46/9/50 & 46/9/60	B127A	SP-C	-	-
46/10	B26E	-	COLL/38	-
46/11 - 46/18	B95A & B127A	SP-C	-	-
46/19	B19A	SP-C	-	-
46/20	B19	SP-E	-	-
46/21 & 46/22	B182	SP-A	-	-
46/23	B127A	SP-C	-	-
46/29 - 46/33	B95A & B127A	SP-C	-	-
46/34	B127A & B19A	SP-C	-	-
46/35	B127A & B19A	SP-C	-	-
46/37	B95B	SP-F	-	-
46/38	B127A	SP-C	-	-
46/39 & 46/39L	B95A, B127A, B16A & B19A	SP-C	-	-
46/40	B127 & B16	SP-A	-	-
46/41	B95A	SP-C	-	-
46/42	B95A & B127A	SP-C	-	-
46/43	B127A	SP-C	-	-
46/44	B22, B19 & B16	SP-E	-	-
46/45 - 46/49	B127A	SP-C	-	-
46/50	B127 & B16	SP-A	-	-
46/52	B127A & B16A	SP-C	-	-
46/55	B127A	SP-C	-	-
46/56	B16F	SP-D	-	-
46/57 & 46/58	B19	SP-E	-	-
46/60 - 46/66	B95A & B127A	SP-C	-	-
46/67 & 46/68	B127A & B95A	SP-C	-	-
46/70 & 46/71	B127A & B16A	SP-C	-	-
46/75	B95B & B127B	SP-F	-	-
46/80	B127A	SP-C	-	-
46/82	B127A & B127A	-	-	-
46/84 - 46/85	B127A	SP-C	-	-
46/90	B16	-	COLL/14	-
46/91	B127	-	COLL/14	-
46/92	B16	-	COLL/14	-
46/93	B95A & B127A	SP-C	-	-
46/94	B19C	-	COLL/12	-
46/95 & 46/96	B127	-	COLL/14	-
46/96A	B127	-	-	-
46/97 - 46/160	B95A & B127A	SP-C	-	-
46/101	B254G	-	COLL/12	-
46/100	B25G	-	COLL/12	-
46/103 - 107	B127A	SP-C	-	-
46/125, 46/115, 46/116	-	-	-	-
46/130 - 160	B95A + B127A	SP-C	-	-
46/200 & 201	B19A	SP-T	-	-
46/210	B127A	SP-C	-	-
46/211	B182	SP-A	-	-
46/212	B19	SP-E	-	-
46/230 - 46/280	B95B & B127B	SP-F	-	-
46/282 & 46/283	B127A & B16A	SP-C	-	-
46/290	B95A & B127A	SP-C	-	-
46/300 & 301	B19 & B19C	SP-E	COLL/12	-
46/350	B127A	SP-C	-	-
46/351	BN/4	SP-J	-	-
46/380	B254	SP-E	-	-
46/390	B127 & B127	SP-Q	-	-
46/401	B95A	SP-C	-	-
46/501	B19 & B19C	SP-E	COLL/12	-
46/521	B14F & BB16	SP-J	-	-
46/903A	B95	-	-	-
46/900 - 46/904	B95	-	COLL/14A	-
46/913	B127	-	COLL/14	-
84/19 & 84/21	B16	SP-A	-	-
84/24	B127	SP-A	-	-
84/84	B16	-	-	-
90/1 - 90/4	B127A	SP-C	-	-
90/10 & 90/11	BN/1	SP-E	-	-

MULTI-BEARING PACKS

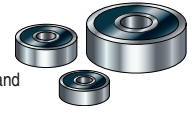
Contain the same size bearing for production applications. Reduced price for each individual bearing.



Description	OD	ID	Product Ref.	Price
10 off B48J	3/16"	3/32"	B48J/10	£65.48
10 off B63B	1/4"	1/8"	B63B/10	£50.34
10 off B95A	3/8"	3/16"	B95A/10	£59.94
10 off B127A	1/2"	3/16"	B127A/10	£50.34
10 off B19H	19.0mm	6.0mm	B19H/10	£70.48
10 off B16	5/8"	1/4"	B16/10	£37.91
10 off B19C	3/4"	1/2"	B19C/10	£75.84

RUBBER SHIELDED BALL BEARINGS

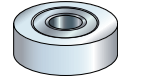
Give an improved protection from dust and dirt.



OD	ID	Thickness	Product Ref.	Price
1/2"	3/16"	3/16"	B127ARS	£15.11
5/8"	1/4"	3/16"	B16RS	£8.40
3/4"	1/4"	9/32"	B19RS	£8.25
22.0mm	8.0mm	7.0mm	BB22RS	£11.59
35.0mm	15.0mm	11.0mm	B35GRS	£21.14

PLASTIC SLEEVED BEARINGS

Plastic sleeved for solid surface cutters. Refs. BNT/2 & BNT/5 are tapered.



OD	ID	Thickness	Product Ref.	Price
1/2"	3/16"	4.9mm	BN/4	£11.59
3/4"	1/4"	5.8mm	BN/1	£11.59
28.6mm	15.0mm	9.0mm	BN/3	£24.68
20/21.8mm	1/4"	5.7mm	BNT/2	£11.59
21/22.4mm	1/4"	6.8mm	BNT/5	£11.59

Cutter reference	Replacement bearing	Bearing fixing packs	Collar packs & circlips	Blade fixing screw
90/12	B16F	SP-D	-	-
90/13 & 90/14	B16	SP-A	-	-
90/20 & 90/21	BN/3	-	COLL/12	-
90/23 & 90/24	B29C	-	-	-
90/25 & 90/26, 90/28	BN/4	SP-C	-	-
90/29	BNT/5	SP-E	-	-
90/30	B19	SP-E	-	-
90/31	B29C	-	COLL/12	-
90/40	B16F	SP-D	-	-
90/44	B16A	SP-D	-	-
91/20	BB41 & BB43	-	-	-
92/1 - 92/6	B127A	SP-C	-	-
92/20 - 92/27	B16F	SP-D	-	-
93/3	B16F	SP-D	-	-
93/1	B16F	SP-C	-	-
93/2 & 93/10	B127A	-	-	-
93/11	B16A	SP-D	-	-
331	B22C	-	COLL/12	-
333	B28C	-	COLL/12	-
334	B29C & B35C	-	COLL/12	-
343 & 344	B29C	-	COLL/12	-
346 & 348	B32	-	-	-
753	BB16	-	-	-
865	B127A	SP-C	-	-
C040	B127A	SP-I	-	-
C040A	B127A	SP-C	-	-
C043B	B127	-	COLL/14	-
C044B	B127	-	COLL/14	-
C049	B95A	SP-I	-	-
C059	B95B	SP-F	-	-
C060	B95B	SP-H	-	-
C061	B95B	SP-F	-	-
C062 - C063A	B95A	SP-H	-	-
C063B, C063C, C065 & C066	B127A	SP-C	-	-
C074 - C079E	B95A & B127A	SP-I	-	-
C086	B95A	SP-H	-	-
C087	B95B	SP-H	-	-
C090	B95B	SP-F	-	-
C091	B95A	SP-C	-	-
C094	B95A & B127A	SP-I	-	-
C095	B95A & B127A	SP-C	-	-
C096	B95A & B127A	SP-I	-	-
C097	B95A	SP-I	-	-
C098 - C099	B95A & B127A	SP-I	-	-
C104	B95A & B127A	SP-I	-	-
C105	B95A & B127A	SP-C	-	-
C111	BB22	-	CIRC/1	-
C112, C115 & C115A	B95A	SP-I	-	-
C116 - C116A	B127A	SP-I	-	-
C117	B16	SP-D	-	-
C117A & C117B	B19	SP-I	-	-
C117C	B182	SP-I	-	-
C119	B127A	SP-C	-	-
C119A	B127A	SP-I	-	-
C119B	B127A	SP-C	-	-
C121, C121B & C121D	B127	-	COLL/14	-
C121A	BB16	-	COLL/8	-
C121C & C121E	B16	-	COLL/14	-
C121G & C121H & C121P	B95	-	COLL/14A	-
C121K & C121N	B127	-	COLL/14	-
C122	B127A	SP-I	-	-
C123	B19	-	COLL/14	-
C130	B16	SP-I	-	-
C131	BB22	-	CIRC/1	-
C133	B19	SP-C	-	-
C134, C138A, B & C	B127A	SP-C	-	-
C138 - C139	B95A	SP-C	-	-
C140	B127A	SP-I	-	-
C143 - C148	B127A	SP-I	-	-
C149	BB22	-	-	-
C156 - C158	BB22	-	-	-
C152	B127A, B16A & B19A	SP-J	-	-
C155	BB22	-	-	-
C162 - C162A	B127	-	COLL/14	-
C165A	B182	-	SP-I	-

Cutter reference	Replacement bearing	Bearing fixing packs	Collar packs & circlips	Blade fixing screw
C165B	B19C	-	COLL/12	-
C165 - C166	B19C	-	COLL/12	-
C166B	B245C	-	COLL/12	-
C167 - C168	B63B	SP-R	-	-
C170	B127A	SP-I	-	-
C170A	BB16	-	-	-
C183 - C184	B127A	SP-I	-	-
C183B & C184A	BB16 & BB318	-	-	-
C190 - C191	B127A	SP-I	-	-
C193	B95A & B127A	SP-I	-	-
C193A	BB22, BB19, BB16	SP-E	-	-
C195 - C197	B127A	SP-I	-	-
C198	B95A & B127A	SP-I	-	-
C199	B19 & B19C	SP-I	COLL/12	-
C201 & C203	B35G	-	CIRC/2	-
C204	BB22	-	-	-
C205	B127A	SP-I	-	-
C206	B22C	-	COLL/12	-
C207	B29C	-	COLL/12	-
C208 & C221	B32	-	-	-
C209 & C220	B16	-	-	-
C210 - C213	B22C	-	COLL/12	-
C210A - C213A	BB20	-	COLL/14	-
C214	BB16	-	COLL/8	-
C214A	BB19C	-	COLL/12	-
C215	B127A	SP-I	-	-
C216	B16F	SP-I	-	-
C217 & C217A	B127A	SP-I	-	-
C218	B16F	SP-I	-	-
C223	B32	-	-	-
C224	B16	-	COLL/14	-
C225	B16	SP-C	-	-
C225C	B127	SP-C	-	-
C226	B19	SP-I	-	-
C255 & C256	BB34 & BB22	-	-	-
C260	B16	SP-I	-	-
C265	B127A	SP-I	-	-
C266	B95A	SP-I	-	-
C272 & C273	B127A	-	COLL/14	-
MB/01 - MB/08	B48J	SP-X	-	-
MB/09 & MB/10	B48J	-	-	-
MB/11 & MB/12	B63B	-	-	-
PSC	BB22	-	-	-
QUAD	BB22	-	-	-
RT/03	-	-	-	RT/M3.0
RT/04 - RT/08, RT/10, 11(M), 12(M), RT/13 - RT/15 - RT/19, RT/21	-	-	-	RT/3.5
RT/23 - RT/24	-	-	-	-
RT/33, RT/39	B127	-	-	SP-46/02D
RT/30 - RT/32	B16	-	-	SP-46/02D
RT/40 & RT/41	-	-	-	RT/3.5 & SP-46/02D
RT/50, RT/51 & RT/60	-	-	-	SP-46/02D
RT/65	B127A	SP-W	-	RT/M3.0
RT/70	B19C	-	COLL/12	RT/3.5
RT/72	B19C	-	COLL/12	SP-46/02D
RT/75	B19C & B19	RT/M4.0 ▲	COLL/12	SP-46/02D
RT/80	-	-	-	RT/3.5
RT/81	-	-	-	RT/M3.0
RT/100	B127	-	-	RT/M3.0
RT/130, 260	B127A	-	-	RT/M3.0
RT/323	-	-	-	RT/3.0
RT/331	B127A	SP-W	-	RT/M3.0
RT/343	B35C	-	COLL/12	RT/3.5
RT/391	B95A	SP-W	-	RT/M3.0
S46/02	B63B	SP-G	-	-
S49/10	B127 & B127	-	COLL/14	-
S64/2	B63B	SP-G	-	-
S64/30	B63B	SP-G	-	-
SSP/1-2B, 4 - 9B	B95A & B127	SP-C	COLL/14	-
SSP/3-3B	B95B & B127	SP-F	COLL/14	-
T46/0 & T46/02	B95A	SP-C	-	-
T46/01	B127A	SP-C	-	-
T46/04	B127A	SP-C	-	-
T46/1	B16	SP-E	-	-

BEARING FIXING PACKS

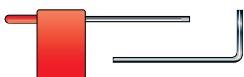
Spare part packs make ordering spares easier. Packs include hex key, screw, washer & shield (if required). See chart above for selection of correct pack & replacement bearing.



Key Type	Size A/F	Cap Head Screw	Washer ID	Shield OD x ID	Product Ref.	Price per Pack
Hex	3mm	M4 x 6mm	4.0mm	-	SP-A	£2.68
Hex	3mm	M4 x 6mm	4.0mm	5/8" x 1/4"	SP-B	£2.68
Hex	3/32"	NC5 x 3/8"	3.5mm	{ 1/2" x 3/16" 5/16" x 3/16" }	SP-C	£3.55
Hex	3/32"	NC5 x 3/8"	3.5mm	16mm x 5mm	SP-D	£2.68
Hex	4mm	NF10 x 1/2"	5.0mm	15mm x 6.3mm	SP-E	£2.68
Hex	5/64"	NC3 x 3/8"	2.0mm	3/8" x 1/8"	SP-F	£4.08
-	-	NC2 x 7/32" (Pozi®)	2.0mm	-	SP-G	£1.84
Hex	{ 2.5mm 3/32" }	{ 1/8" w x 3/8" M3 x 8mm }	3.5mm	-	SP-H	£2.68
Hex	{ 2.5mm 3/32" }	{ M3 x 8mm NC3 x 3/8" }	{ 3.5mm 5.0mm }	1/2" x 3/16"	SP-I	£3.55
Hex	2.5mm	M3 x 8mm	5.0mm	1/2" x 3/16"	SP-J	£2.68
Hex	3/32"	NC5 x 1/2"	3.5mm	-	SP-Q	£3.55
Hex	5/64"	M2.5 x 6mm	2.5mm	3.2mm x 6mm	SP-R	£3.55
Hex	5/64"	M3 x 12mm (csk)	-	-	SP-T	£2.33
-	-	M3 x 8mm (pan)	-	5/16" x 3/16"	SP-W	£13.29
-	-	Hex nut	-	4.2mm - 2.15mm	SP-X	£7.56
Hex	2.5mm	M4 x 5.5mm (Dome)	-	15mm x 5mm	SP-Y	£6.86

KEYS

Gives positive and quick action to help prevent overtightening and to allow quick tightening of screw.



Key Type	Key Size	Product Ref.	Price
Hex	1.5mm	RT/KEY/1.5	£8.90
Hex	1/16"	AK/116	£1.34
Hex	3/32"	AK/332	£1.27
Hex	2.5mm	AK/25	£1.27
Hex	1/8"	AK/18	£1.27
Hex	4.0mm	AK/4	£1.27
Torx®	T9	RT/KEY/T9	£7.03
Torx®	T15	RT/KEY	£7.03

COLLAR PACKS

Collar Packs are used for cutters with shank mounted bearings. Packs include one collar, grub screw and hex key.



Collar OD	Collar ID	Hex Key	Product Ref.	Price per Pack
11.0mm	1/4"	1/16"	COLL/14	£3.18
14.0mm	8.0mm	5/64"	COLL/8	£3.18
15.0mm	3/8"	1/16"	COLL/38A	£3.18
18.0mm	1/2"	1/16"	COLL/12	£3.18
20.0mm	1/2"	1/16"	COLL/12A	£3.18

CIRCLIPS

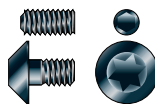
Sprung steel fasteners to hold bearings in position onto grooved shanks.



Collar ID	Product Ref.	Price per Pack
8.0mm	CIRC/1	£1.84
1/2"	CIRC/2	£1.84

BLADE FIXING SCREWS FOR ROTA-TIP

Always use our replacement screws if those supplied with the tool are lost or need replacing.



Driver Type	Screw Size & Type	Key Required	Screw Product Ref.	Price
Slot	M3 x 4mm, dome 7mmØ	-	RT/M3.0	£4.02
Torx®	M3 x 4mm, dome 5.5mmØ	Torx® T9	RT/3.0	£4.02
Torx®	M3.5 x 5mm, 6mmØ	Torx® T15	RT/3.5	£4.02
Torx®	M4 x 5.5mm, dome 8mmØ	Torx® T15	SP-46/02D	£2.68
Hex	M3 x 5mm set	Hex 1.5mm	SP-46/01D	£1.84
Hex	M4 x 10mm, dome 7.3mmØ	Hex 2.5mm	RT/M4.0	£4.02

BEARING FIXING SCREWS FOR ROTA-TIP

Spare fixing screws.

Type	Dome Screw Size	Key Required	Product Ref.	Price
Torx®	M4 x 5.5mm	T15	SP-46/02D	£2.68
Hex	M4 x 5.5mm	2.5mm A/F	RT/4.0	£3.18