



Please read carefully before use

AIR/PRO

Battery
AIR/P/4
Charger
AIR/P/5



INST/AIR/P/BC v7.0

trend[®]

tool technology

UK Battery Ref. AIR/P/4
UK Charger Ref. AIR/P/5/UK
EURO Charger Ref. AIR/P/5/EURO
USA Charger Ref. AIR/P/5L/USA

Thank you for purchasing this Trend product, which should give lasting performance if used in accordance with these instructions.

The following symbols are used throughout these instructions.



Denotes risk of personal injury, loss of life or damage to the tool in case of non-observance of the instructions.



Denotes risk of electric shock.

This product must not be put into service until it has been established that the power tool to be connected to this unit is in compliance with 2006/42/EC (identified by the CE marking on the power tool) or UK Statutory Instruments 2008 No. 1597 – The Supply of Machinery (Safety) Regulation (identified by UKCA marking on the power tool).

INTENDED USE

These accessories are only intended to be used with the Trend Airshield Pro.

SAFETY

Please read and understand the safety points at the end of this instruction as well as the power tool instructions before use.

PLEASE KEEP THESE INSTRUCTIONS IN A SAFE PLACE.

Users must be competent in using woodworking equipment before using our products. Ensure working position is comfortable.

Please keep children and visitors away from tools and work area. All tools have a residual risk, so must therefore be handled with caution.

SAFETY INSTRUCTIONS FOR BATTERY CHARGER

Before using charger, read all instructions and cautionary marking on charger, battery pack, and respirator. Only charge your batteries indoors as the charger is designed for indoor use only.



230 volts (UK & EURO), 120V (USA) present at charging terminal. Do not probe with conductive objects. There is a danger of electric shock.



If battery pack case is cracked or damaged, do not insert into charger. There is a danger of electric shock.

- The charger and battery pack is specially designed to work together. **DO NOT** attempt to charge the battery pack with any other chargers.
- Do not expose charger to rain or snow.
- The charger is not intended for any uses other than charging AIR/PRO rechargeable batteries. Any other uses may result in risk of fire, electric shock or electrocution.
- To reduce risk of damage to electric plug and cord, pull by plug rather than cord when disconnecting charger.
- Make sure cord is located so that it will not be stepped on, tripped over, or otherwise subjected to damage or stress.
- An extension cord should not be used.
- The charger is ventilated through slots in the housing. Do not place any object on top of charger or place the charger on a soft surface that might block the ventilation slots and result in excessive internal heat. Place the charger in a position away from any heat source.
- Do not operate charger with damaged cord or plug - have them replaced immediately.
- Do not operate charger if it has received a sharp blow, been dropped, or otherwise damaged in any way; take it to a Trend Service Agent.
- Do not disassemble charger. Incorrect reassemble may result in a risk of electric shock, electrocution or fire.
- To reduce risk of electric shock, unplug charger from outlet before attempting any cleaning. Removing the battery pack will not reduce this risk.
- **NEVER** attempt to connect two chargers together.
- **DO NOT** store or use the tool and battery pack in locations where the temperature may reach or exceed 40.5°C (105°F) (such as outside sheds or metal buildings in summer).
- The charger is designed to operate on standard household electrical power. Do not attempt to use it on any other voltage!

SAFETY INSTRUCTIONS FOR BATTERY PACKS



- The battery pack is not fully charged when first purchased. First read the safety instructions below, then follow charging notes and procedures.
- Do not incinerate the battery pack even if it is severely damaged or is completely worn out. The battery pack can explode in a fire.
- A small leakage of liquid from the battery pack cells may occur under extreme usage or temperature conditions. This does not indicate a failure. However, if the outer seal is broken and this leakage gets on your skin:
 - Wash quickly with soap and water.
 - Neutralise with a mild acid such as lemon juice or vinegar.
 - If battery liquid gets into your eyes, flush them with clean water for a minimum of 10 minutes and seek immediate medical attention.
- Never attempt to open the battery pack for any reason. If the plastic housing of the battery pack breaks or cracks, immediately discontinue use and do not recharge.
- Do not carry extra battery packs in aprons, pockets, or toolboxes along with metal objects. Battery pack could be short-circuited causing damage to the battery pack and possibly causing severe burns or fire.
- Charge the battery packs only in a Trend charger.
- Do not charge the tool in a damp or wet environment.

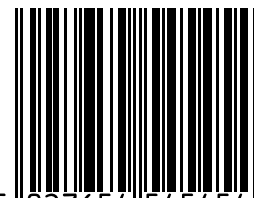
Trend Tool Technology Ltd.
Watford, WD24 7TR, England
www.trend-uk.com

EU Importer:
Trend Tool Technology Ltd.
3rd Floor, Kilmore House,
Park Lane, Spencer Dock,
Dublin 1, Ireland

USA Trend Tool Technology Inc.
Tel: 336 292 5051
CA technical@trend-usa.com
www.trend-usa.com



© Trend Tool Technology Ltd.
2014, 2015, 2020, 2023 E&OE
© All trademarks acknowledged



PTO

- Longest life and best performance can be obtained if the battery pack is charged when the air temperature is between 18°C (65°F) and 24°C (75°F). **DO NOT** charge the battery pack in an air temperature below 4.5°C (40°F), or above 40.5°C (104°F). This is important and will prevent serious damage to the battery pack.

- The charger and battery pack may become warm to touch while charging. This is a normal condition, and does not indicate a problem.

- To prevent overheating, do not cover the charger and do not charge battery packs in direct sunlight or near heat sources.

- If the battery pack does not charge properly:-

1. Check current at receptacle by plugging in a lamp or other appliance.

2. Check to see if receptacle is connected to a light switch, which turns power off when you turn out the lights.

3. Move charger and battery pack to a location where the surrounding air temperature is approximately 18°C (65°F) and 24°C (75°F).

4. If charging problems persist, take or send the tool, battery pack and charger to a Trend Service Agent.

- DO NOT CONTINUE** to use if the battery pack does not charge properly.

- Always unplug the charger from the power supply when there is no battery pack in the

cavity. Unplug charger before attempting to clean.



Do not allow any liquid to get inside charger. Electric shock may result. To facilitate the cooling of the battery pack after use, avoid placing the charger or battery pack in a warm environment such as in a metal shed, or an un-insulated trailer.



Never attempt to open the battery pack for any reason. If the plastic housing of the battery pack breaks or cracks, do not use.



Read all of the instructions in the battery charger section of this manual before attempting to charge the battery pack for your tool.

- Always use correct battery pack (pack supplied with tool or exact replacement pack). Never install any other battery pack as it will ruin your tool and may create a hazardous condition.

- Always unplug the charger from the power supply when there is no battery pack in the

BATTERY PACK INSTALLATION UK

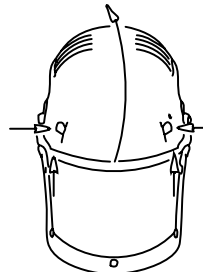
The Powered Respirator is supplied with one rechargeable battery pack for eight hours duration.



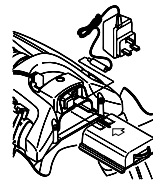
Battery pack must be initially charged for 24 hours.

Check that the voltage shown on the charger is suitable for the mains supply. A thermal fuse protects the charger against short circuiting and overloading.

- Lift the cover by pressing the forward side tabs inwards and rotating the cover rearwards as shown below:



- Slide the battery pack into its housing as shown below.



- Refit cover ensuring tabs lock the cover in position.

BATTERY PACK CHARGING

- Fit the battery charger connector into the rear of the electronics unit and connect the charger to a mains AC supply. The LED lights up and remains lit even after a full charge has been completed.

- After charging switch off the mains AC supply, remove the charger connector from the respirator.

Battery packs should be initially charged for 24 hours and 14 hours thereafter when fully discharged. A 3.5 hour charge will enable 1 hour of usage. Full working capacity of the battery will not be achieved until the battery has been through 3 or 4 complete charging cycles. Please note:

For UK the light will not extinguish when a full charge has been achieved.

For USA when plugged into a 'live' outlet, and no battery connected LED illuminates as green to show a live circuit. When connected to an under charged battery, in helmet or battery cradle, the LED changes to red. When battery charging is complete, the LED changes back to green and battery is on a trickle charge.

The respirator has a pre-use and low battery audio signal. Leave the contaminated area if the buzzer sounds.



Charger must be disconnected from the mains supply when not in use.

After the charging period, remove the charger from the AC supply socket.

MAINTENANCE

Please use only Trend original spare parts and accessories.

Charger Cleaning

- Dirt and grease may be removed from the exterior of the charger using a cloth or soft non-metallic brush. Do not use water or any cleaning solutions.

ENVIRONMENTAL PROTECTION

Recycle raw materials instead of disposing as waste.



Accessories and packaging should be sorted for environmental-friendly recycling.

Separate collection. This product must not be disposed of with normal household waste.

Household User

Local regulations may provide for separate collection of electrical products from the household, at municipal waste sites or by retailer when you purchase a new product.

Please call Trend Customer Services for advice as to how to dispose of unwanted Trend electrical products in an environmentally safe way or visit www.trend-uk.com

Business User

Please call Trend Customer Services for disposal of unwanted Trend electrical products.

Rechargeable Batteries and the Environment



This unit uses Nickel-Metal Hydride (Ni-MH) batteries. When battery pack needs replacing, we recommend the following:-

Discharge the energy from the batteries by running the batteries down completely and then remove from the tool.

Ni-MH cells are recyclable: so do not throw them away with your household waste. They may end up in an incinerator or landfill, which must be avoided.

Instead, take the batteries to a Trend Service Agent, your local Trend Stockist or a local recycling station. If necessary contact your local municipality for disposal information. The collected batteries will be disposed of properly and/or used for recycling purposes. Trend Product Number BPRN00037.

GUARANTEE

All Trend products are guaranteed against any defects in either workmanship or material, except products that have been damaged due to improper use or maintenance.